



Profit from the Eagle Advantage®

# Specification Sheet

## Short Form Specifications

Eagle Mobile Computer (Chrome / Stainless Steel) Workstation, model \_\_\_\_\_. Constructed of (chrome / stainless steel) wire shelves with patented Quadtruss® design. Furnished with keyboard drawer, 12"-wide cantilever shelf, wire undershelf, and wire worktop. (Chrome / stainless steel) tubular posts mounted on casters.



mobile computer workstation shown with optional casters and optional mouse shelf

## Options / Accessories

- Mouse shelf
- 2 1/2" swivel decorative casters
- 4" swivel decorative casters
- Channel frame for rigid casters
- Aluminum split sleeves
- Anti-static drag chain
- Plastic shelf markers (3"-19" long)

## EAGLE GROUP

100 Industrial Boulevard, Clayton, DE 19938-8903 USA

Phone: 302-653-3000 • Fax: 302-653-2065

www.eaglegrp.com

Foodservice Division: Phone 800-441-8440

MHC/Retail Display Divisions: Phone 800-637-5100

For custom configuration or fabrication needs, contact our SpecFAB® Division.

Phone: 302-653-3000 • Fax: 302-653-3091 • e-mail: specfab@eaglegrp.com

Item No.:	_____
Project No.:	_____
S.I.S. No.:	_____

# Mobile Computer Workstations

## MODELS:

- MCWS2424C
- MCWS3030C
- MCWS2424S
- MCWS3030S
- MS-C

## Design and Construction Features

- Features include the following:
  - Two 48" (1219mm) rear posts;
  - Two 33" (838mm) front posts;
  - One 12" (305mm)-wide wire cantilever shelf;
  - One full-length wire undershelf;
  - One wire tabletop;
  - One keyboard drawer;
  - One 3-sided frame.
- All wire shelves feature patented QuadTruss® design (patent #5,390,803).
- Available in chrome or stainless steel.
- 38 3/4" (975mm) working height\*.
- 53 3/4" (1356mm) overall height\*.
- Shipped knocked-down.

\*Dimensions include optional 5" (127mm) casters.

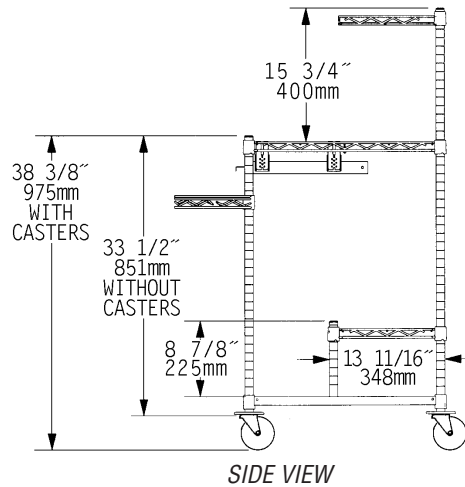
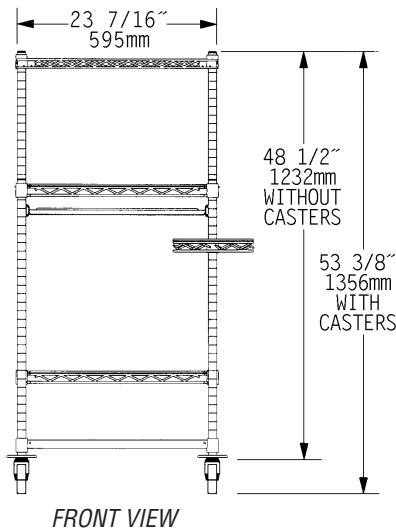
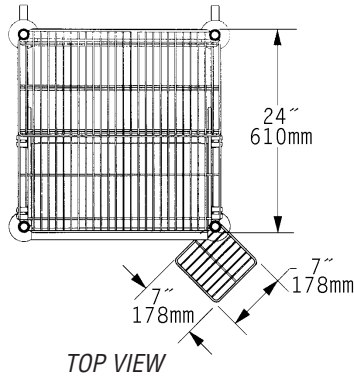




Profit from the Eagle Advantage®

Item No.: \_\_\_\_\_  
 Project No.: \_\_\_\_\_  
 S.I.S. No.: \_\_\_\_\_

# Mobile Computer Workstations



(note: #MCWS2424C shown)

chrome model #	stainless steel model #	tabletop		undershelf		weight	
		width in. mm	x length in. mm	width in. mm	x length in. mm	lbs.	kg
MCWS2424C	MCWS2424S	24" 610	24" 610	14" 357	24" 610	40	18.1
MCWS3030C	MCWS3030S	30" 762	30" 762	18" 457	30" 762	56	25.4

## Optional Mouse Shelf

model #	width		length		weight	
	in.	mm	in.	mm	lbs.	kg
MS-C	7"	178	7"	178	2.0	0.9



optional mouse shelf

**EAGLE GROUP**  
 100 Industrial Boulevard, Clayton, DE 19938-8903 USA  
 Phone: 302-653-3000 • Fax: 302-653-2065  
 www.eaglegrp.com

Foodservice Division: Phone 800-441-8440  
 MHC/Retail Display Divisions: Phone 800-637-5100

Printed in U.S.A.  
 ©2008 by Eagle Group

Rev. 09/08

Spec sheets available for viewing, printing or downloading from our online literature library at [www.eaglegrp.com](http://www.eaglegrp.com)

Although every attempt has been made to ensure the accuracy of the information provided, we cannot be held responsible for typographical or printing errors. Information and specifications are subject to change without notice. Please confirm at time of order.